



WILD 100

Corporate Sponsorship

Find out more about...

The Opportunity

Who We Are

Why WILDNorth Matters To You

Benefits To Your Company



The Opportunity

You and/or your company have been identified as a potential member of WILDNorth's WILD 100, corporate partner team. WILDNorth is reaching out to community minded organizations and individuals to participate in this new partnership. To become a member, we are asking for a small annual contribution of \$500 from 100 dedicated companies/individuals.

Who We Are



WILDNorth is a registered charitable organization that provides compassionate care for injured, contaminated and orphaned wildlife and we educate the public on the importance of wildlife in our community.

WILDNorth has been serving the capital region and northern Alberta for over 25 years and is considered an essential service by the city of Edmonton. As the northern-most wildlife rehabilitation facility in Alberta, we work diligently to provide world class care for a wide variety of native and migratory birds as well as native small mammals.

Our services are based out of two facilities in the capital region; the

Wildlife Hospital in north Edmonton which functions as an intake and triage centre, and our rehabilitation facility located on Nature Conservancy of Canada (NCC) land in Parkland County. The Rehabilitation Centre houses animals that have been stabilized and are presumed to be successful in the rehabilitation and release process.

We are permitted through the Canadian Wildlife Service (CWS) and Alberta Environment Sustainable Resources Development (Fish and Wildlife). Our Wildlife Technicians are certified veterinary technicians with specialized internal training specific to small mammals and birds native to Alberta.



Ongoing medical care

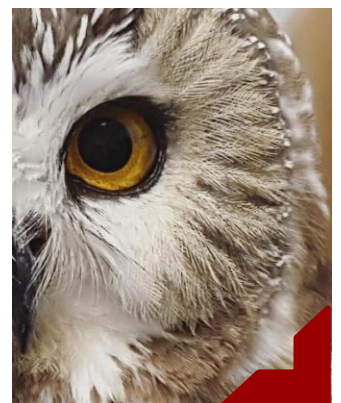
Why WILDNorth Matters to You

There are many reasons that WILDNorth could matter to you and your company. Consider one or more of the following as it applies to you.

- ❖ WILDNorth has provided services to you in the past
- ❖ You are in the vicinity of the river valley or another high traffic wildlife area
- ❖ You care about the well being of wildlife
- ❖ Your company values nature and wildlife
- ❖ You are compassionate towards living creatures
- ❖ Your company has an impact on the natural environments/habitats and you want to give back
- ❖ Your company has an impact on the natural environments/habitats and you want to improve your public image
- ❖ You have employees who support or volunteer with WILDNorth
- ❖ You are a proud Albertan/Western Canadian who understands the value of the northwestern wildlife as part of Alberta's identity

WILDNorth 2016 Stats

- Fielded over 7000 phone calls from the public
- Reached over 4000 students through our education program
- Cared for 2555 wildlife patients

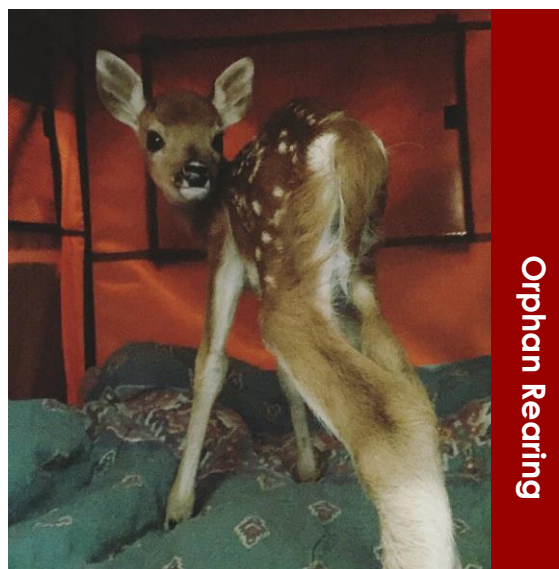




Benefits to Your Company

We at WILDNorth recognize that a positive public/internal image, as well as networking and advertising opportunities, are important to any company. WILDNorth is a respected organization in Northern Alberta. By attaching your name as a partner of WILDNorth, you are saying to the public and your stakeholders that you are a quality company supporting a quality organization that provides an important service to the community. It is saying that you and your organization are taking measures to positively impact the community and its wildlife. To help facilitate the benefits of supporting WILDNorth, your organization can expect the following:

- ❖ Visual Recognition on our "WILD 100" wall in the front entrance of our Wildlife Hospital
- ❖ One piece of marketing material annually to be distributed with our monthly e-newsletter
- ❖ One "shout-out" annually and profile write-up on our weekly "Pack Tracks Tuesday" Facebook post
- ❖ Recognition on our website in our WILD 100 page
- ❖ An Invitation to one animal release annually.
- ❖ Complimentary team entry in our annual fundraiser "Run Wild for Wildlife" (we still ask team members to raise pledges)





Release

If you have any questions regarding participation in the “WILD 100” corporate partnership opportunity, please contact me and I would be happy to discuss it further. If you would prefer an onsite visit to one of our facilities, we can accommodate a brief tour of our facility. We have included in this package, information regarding all of our animal care, volunteer and education programs, information regarding future initiatives, other partnership opportunities, and information on how to become a member of the WILD 100. Sincere thanks, for taking the time to consider this opportunity.

Regards,

Graham Currie

Executive Director, WRSE

780.288.7642 executivedr@wildlife-edm.ca

